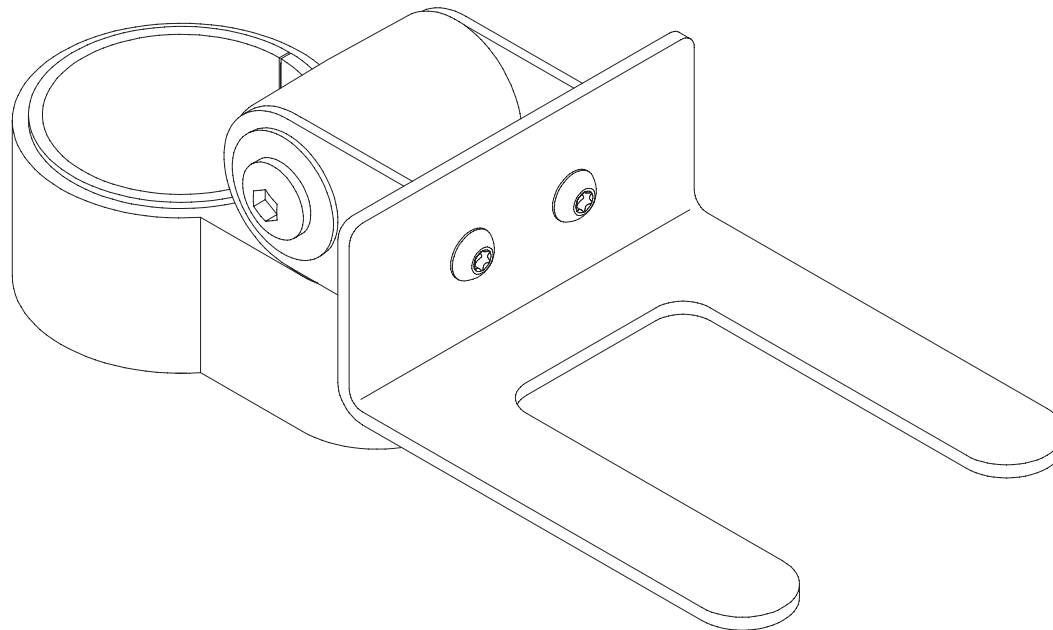


# MNSC10

## Installation Instructions

Innovative Ergonomic Solutions companies

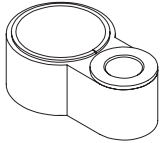
---



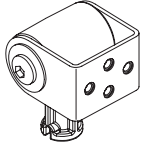
# MNSC10

## Parts List

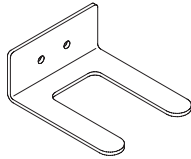
A Mount Yoke 1x  
414351



B Mini Tilter 1x  
416267



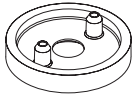
C Scanner Fork 1x  
115913



D Tilt Bracket Screw 2x  
113900



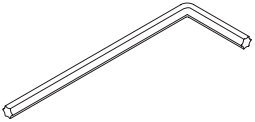
E Dog Washer 1x  
105189



F 10-32 x 3/8" FPhMS w/Lock Patch 1x  
705198



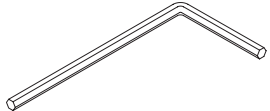
G T25 L-Key 1x  
714899



H 3/32" Allen Wrench 1x  
700146



I 7/32" Allen Wrench 2x  
701127



1

