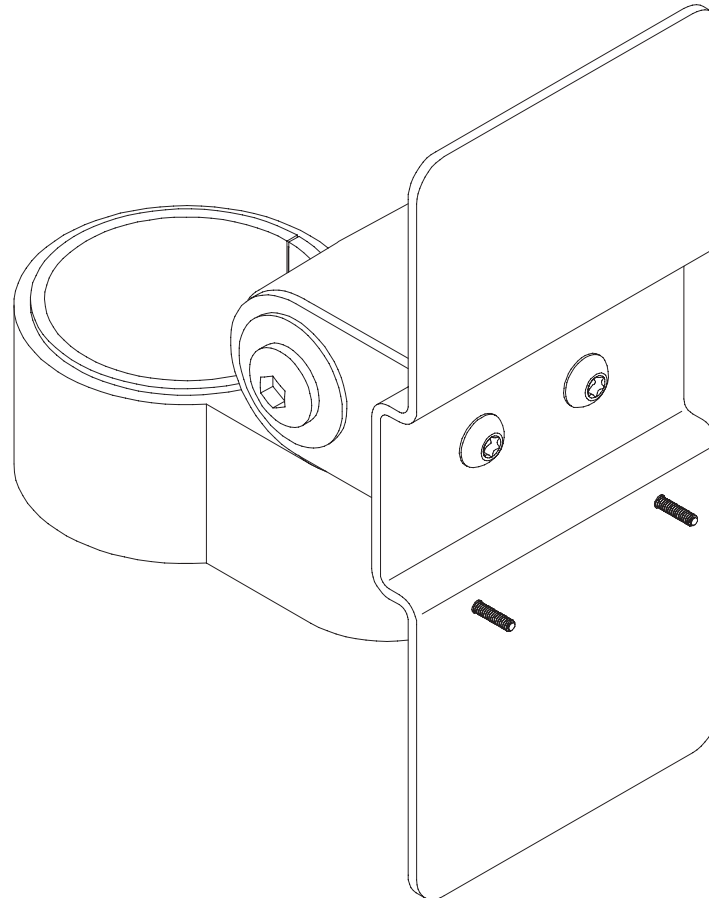


MNPA10-VX805-VX820

Installation Instructions

Innovative Ergonomic Solutions companies

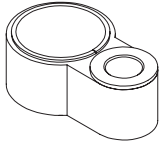


Innovative Ergonomic Solutions
800 524 2744
customerservice@team-ies.com
team-ies.com

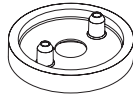
MNPA10-VX805-VX820

Parts List

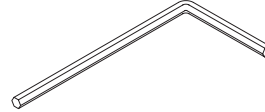
A Mount Yoke 1x
414351



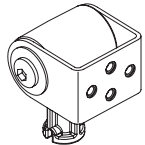
F Dog Washer 1x
105189



K 7/32" Allen Wrench 2x
701127



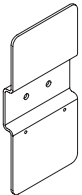
B Mini Tilter 1x
416267



G 10-32 x 3/8" FPhMS w/Lock Patch 1x
705198



C Verifone VX805/VX820 Adapter Plate 1x
114636



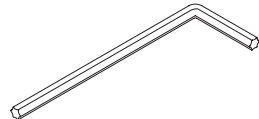
H T6 L-Key 1x
714897



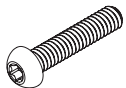
D Tilt Bracket Screw 2x
113900



I T25 L-Key 1x
714899



E M2-0.4 x 10mm Button Head Torx Screw 2x
714773



J 3/32" Allen Wrench 1x
700146



1

