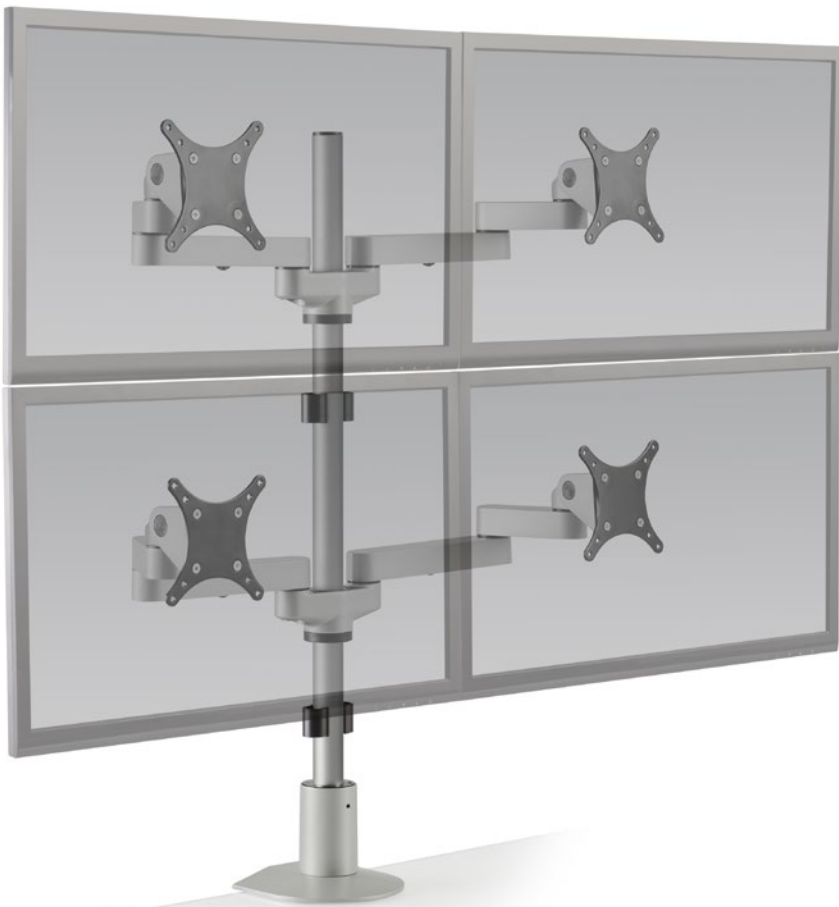


# 9120-D

MONITOR ARMS



innovative™  
design works

## SPACE-SAVING ERGONOMIC COMFORT.

Easily mount two monitors side by side with the space-saving 9120 quad monitor mount. The articulating monitor arms allows users to position each monitor independently of the other, and quickly adjust, pivot, and place as needs change. The included 28" pole mount enables users to set the height at any desired position.

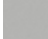



### FEATURES

- **Adjustable:** Friction control system provides smooth adjustment while adjusting the position of the dual monitor arms.
- **Flexible:** Monitor mount includes FLEXmount with six mounting options in one kit.
- **Customizable:** Optional upgrade to quick install/release monitor bracket; consult your sales rep for details.
- **Compatible:** VESA-monitor compatible – 75mm & 100mm VESA adapters included.

### SPECIFICATIONS

#### Finishes

	Silver 124
	Vista Black 104

#### Dimensions

Screen Size: Up to 24"  
 Height Adjustment: Adjusts anywhere along pole  
 Extension Range: 14"  
 Weight Capacity: Up to 20 lbs. per monitor  
 Mount: Desk Edge, Thru-Desk, Grommet, Wall, Reverse Wall, Side Bolt

#### Part Numbers

9120-D-28-FM-\_\_

### WARRANTY

10 years

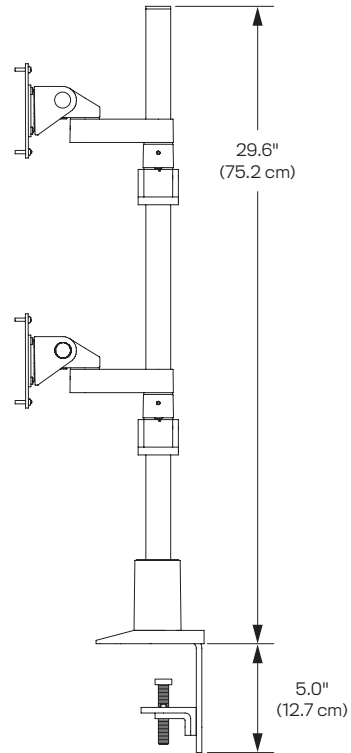
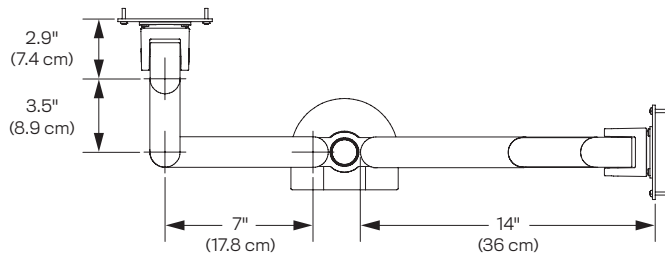


Integrated cable management



Space-saving design

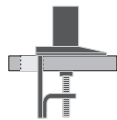
CAPABILITIES



Desk Edge



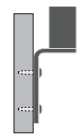
Thru-Desk



Grommet



Wall



Reverse Wall



Side Bolt