

# MONITOR STAND - 9109-SWITCH

MONITOR ARMS



# FREESTANDING MONITOR MOUNT.

Increase productivity and save space with the 9109-Switch dual monitor stand. The monitor mount includes a freestanding base for quick setup.



## FEATURES

- **Instant set up:** Free-standing base allows for instant setup.
- **Productive:** Increase productivity with dual monitor setup.
- **Compatible:** 75mm and 100mm VESA adapter plates included.

## SPECIFICATIONS

### Finishes

 Vista Black  
104

### Dimensions

Pole Height: 14", 28"

Base: 9.5"W x 10.5" L

Monitor Size: Up to 24"

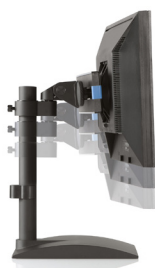
Weight Capacity: Up to 18 lbs. per monitor

### Part Numbers

9109-SWITCH-104



Wide range of monitor tilt



Adjust monitor height



Cable management

## WARRANTY

10 years

CAPABILITIES

